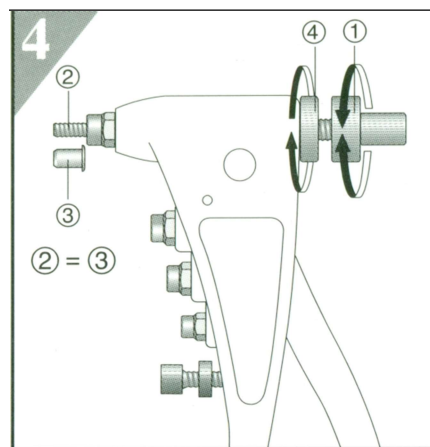
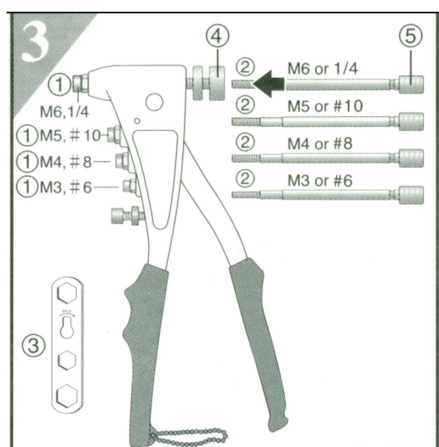
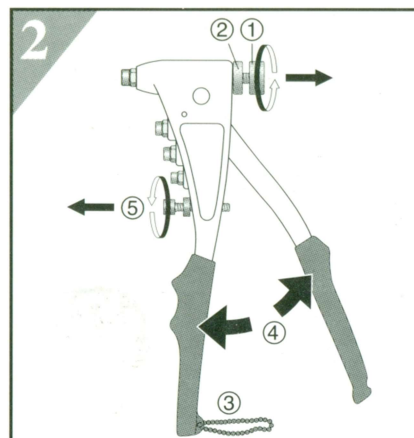
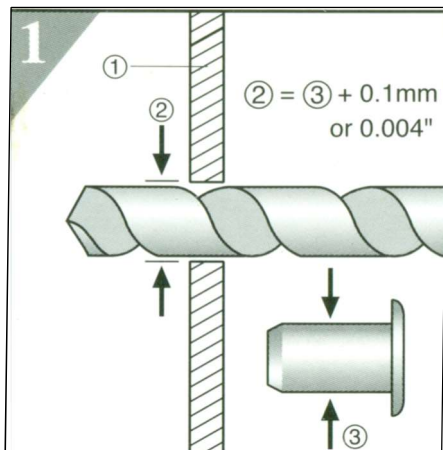


## HAND RIVET NUT TOLL KIT in steel carry case

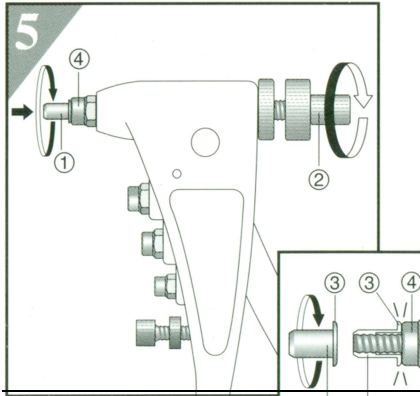
### Operation instructions

For setting M3 – M6 or #6 – 1/4 Rivet Nuts

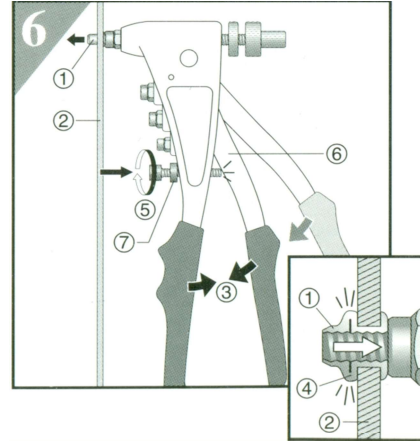


2. Select Nosepiece (1) and Threaded Mandrel (2) to be same size as Rivet Nut threaded size, exchange Nosepieces (1) by Wrench (3), and insert Threaded Mandrel (2) into Adjusting Knob (4) until Threaded Mandrel Knob (5) touches Adjusting Knob (4).

4. Rotate Adjusting Knob (1) to adjust thread length (2) of Threaded Mandrel (3) to be same as Rivet Nut length (3), then turn down the Lock Nut (4) to lock Adjusting Knob (1) position firmly.



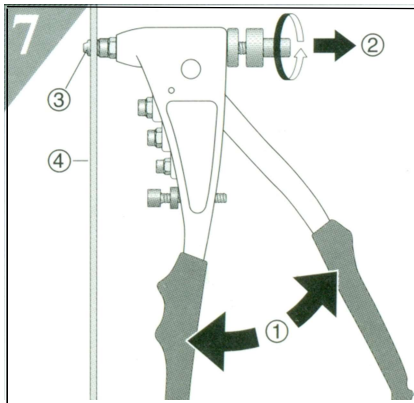
5. Screw the Rivet Nut (1) onto Threaded Mandrel by turning either Rivet Nut (1) or Threaded Mandrel Knob (2) until Rivet Nut head (3) touches Nosepiece (4). The Rivet Nut end should be flush with the Threaded Mandrel end.



6. Insert the screwed Rivet Nut (1) into the drilled Hole of Workpiece (2), squeeze Tool Handles (3) until Rivet Nut is installed firmly by forming a bulge (4) against the back of Workpiece (2), still hold Tool Handles (3) and adjust Stroke Bolt (5) up to touch Upper Handle (6), then turn up Stroke Nut (7) to lock Stroke Bolt (5) position. Now the proper Stroke is built up to protect the Rivet Nut threads and this Rivet Nut Tool as well.

#### NOTE

A proper Stroke ensures Rivet Nut threads to be installed securely, SO THE PILOT TEST IS ALWAYS RECOMMENDED BEFORE INSTALLING DIFFERENT SIZES OF RIVET NUT.

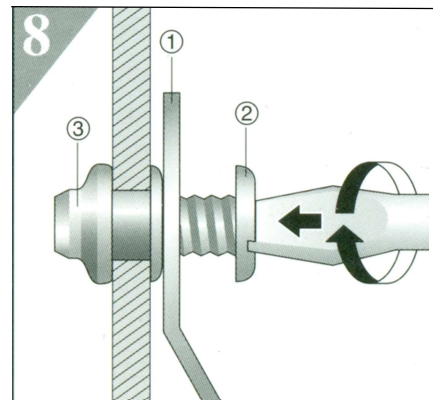


7. Release Tool Handles (1) fully and rotate Threaded Mandrel Knob (2) to unscrew Threaded Mandrel from the installed Rivet Nut (3). Now the Rivet Nut threads are built up securely in the Workpiece (4).

#### NOTE

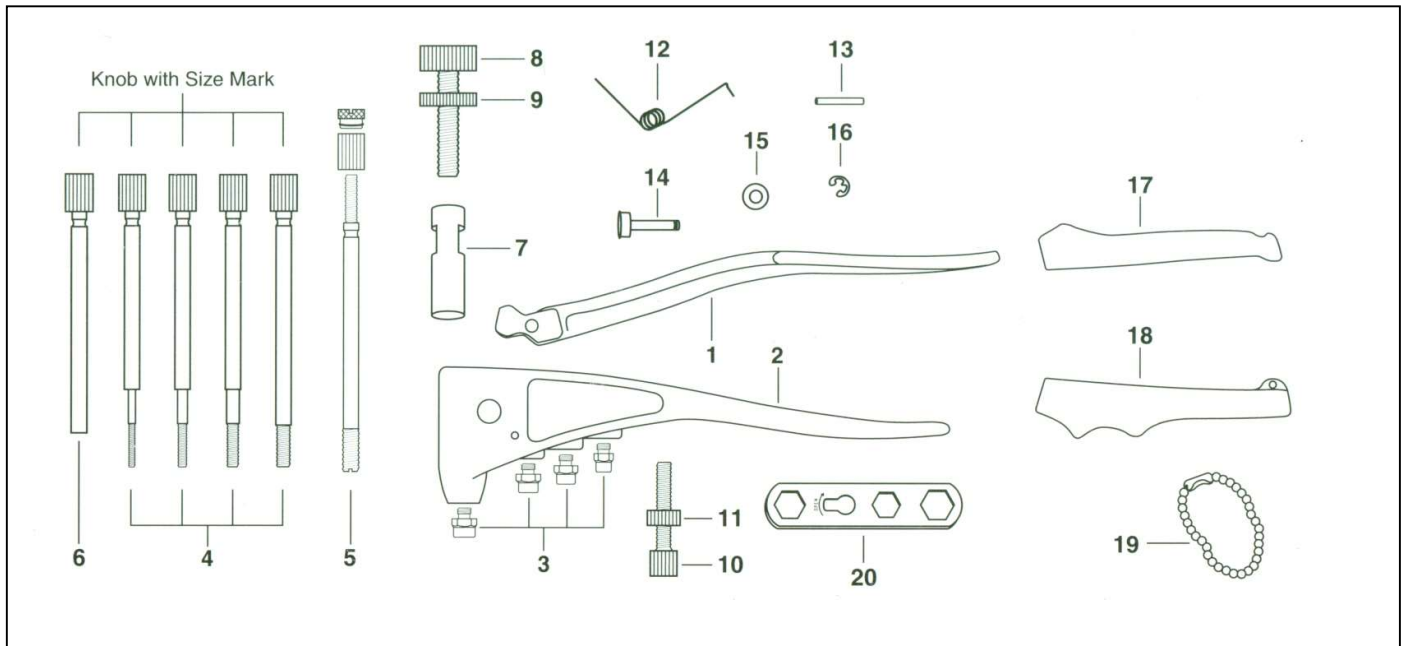
If the next fastening Rivet Nut is same size as previous one, Do Not Need Any Adjustment!

Just repeat above 5. to screw Rivet Nut onto Threaded Mandrel, squeeze Tool Handles to Set Rivet Nut until Upper Handle touches Stroke Bolt, finally follow above 7. to unscrew Threaded Mandrel from the installed Rivet Nut.



8. Fasten an Object (1) by screwing a Bolt or a Screw (2) to the installed Rivet Nut (3)





No.	Part No.	Part Nam
1	6044-01	Upper Handle
2	6044-02	Aluminum Body
• 3-M3	6044-03M3	Nosepiece, for M3 Rivet Nut or Rivet Bolt/Stud.
• 3-M4	6044-03M4	Nosepiece, for M4 Rivet Nut or Rivet Bolt/Stud.
• 3-M5	6044-03M5	Nosepiece, for M5 Rivet Nut or Rivet Bolt/Stud.
• 3-M6	6044-03M6	Nosepiece, for M6 Rivet Nut or Rivet Bolt/Stud.
• 3-6	6044-0306	Nosepiece, for #6 Rivet Nut or Rivet Bolt/Stud.
• 3-8	6044-0308	Nosepiece, for #8 Rivet Nut or Rivet Bolt/Stud.
• 3-10	6044-0310	Nosepiece, for #10 Rivet Nut or Rivet Bolt/Stud.
• 3-14	6044-0314	Nosepiece, for 1/4" Rivet Nut or Rivet Bolt/Stud.
• 4-M305	6044-04M305	Threaded Mandrel, for M3x0.5 Rivet Nut
• 4-M407	6044-04M407	Threaded Mandrel, for M4x0.7 Rivet Nut
• 4-M508	6044-04M508	Threaded Mandrel, for M5x0.8 Rivet Nut
• 4-M610	6044-04M610	Threaded Mandrel, for M6x1.0 Rivet Nut
• 4-632	6044-04632	Threaded Mandrel, for 6-32 Rivet Nut

No.	Part No.	Part Nam
• 4-832	6044-04832	Threaded Mandrel, for 8-32 Rivet Nut
• 4-1024	6044-041024	Threaded Mandrel, for 10-24 Rivet Nut
• 4-1032	6044-041032	Threaded Mandrel, for 10-32 Rivet Nut
• 4-1420	6044-041420	Threaded Mandrel, for 1/4-20 Rivet Nut
• 4-1428	6044-041428	Threaded Mandrel, for 1/4-28 Rivet Nut (Option)
• 5-M8125	6044-05M8125	Threaded Mandrel, 3-PC Type, for M8x1.25 Aluminum Rivet Nut (Option)
• 5-51618	6044-0551618	Threaded Mandrel, 3-PC Type, for 5/16-18 Aluminum Rivet Nut (Option)
• 5-51624	6044-0551624	Threaded Mandrel, 3-PC Type, for 5/16-24 Aluminum Rivet Nut (Option)
• 5-3816	6044-053816	Threaded Mandrel, 3-PC Type, for 3/8-16 Aluminum Rivet Nut (Option)
• 6-M407	6044-06M407	Threaded Socket, for M4x0.7 Rivet Bolt/Stud (Option)
• 6-M508	6044-06M508	Threaded Socket, for M5x0.8 Rivet Bolt/Stud (Option)
• 6-832	6044-06832	Threaded Socket, for 8-32 Rivet Bolt/Stud (Option)
• 6-1024	6044-061024	Threaded Socket, for 10-24 Rivet Bolt/Stud (Option)
• 6-1032	6044-061032	Threaded Socket, for 10-32 Rivet Bolt/Stud (Option)
7	6044-07	Collet Case
8	6044-08	Adjusting Knob
9	6044-09	Lock Nut



No.	Part No.	Part Nam
10	6044-10	Stroke Bolt
11	6044-11	Stroke Nut
12	6044-12	Torsion Spring
13	6044-13	Torsion Spring Pin
14	6044-14	Fulcrum Pin
15	6044-15	Fulcrum Pin Bearing
16	6044-16	Snap Ring
17	6044-17	Upper Grip
18	6044-18	Lower Grip
19	6044-19	Bead Chain Lock
20	6044-20	Wrench
21	6044-25	Insert Card (This Card)
22	6044-26	Plastic Carry Case (Not Shown)

## REMARKS:

- 1) ● means Wearing Parts.
- 2) 6044 Tool can set both Rivet Nuts and Rivet Bolts/Studs. Threaded Mandrels (No. 4 & 5) are for setting Rivet Nuts, Threaded Sockets (No. 6) are for setting Rivet Bolts/Studs.
- 3) Each Nosepiece can set same size of Rivet Nut and Rivet Bolt/Stud. For example, 6044-03M5 Nosepiece can use 6044-04M508 Threaded Mandrel to set M5x0.8 Rivet Nut and use 6044-06M508 Threaded Socket to set M5x0.8 Rivet Bolt/Stud.

## OPERATION INSTRUCTIONS ON REVERSE SIDE

- 4) Part Nos. 6044-05M8125, 6044-0551618, 6044-0551624 and 6044-053816 are optional 3-PC Type Threaded Mandrels that do not need any Nosepieces for setting M8x1.25, 5/16-18, 5/16-24, and 3/8-16 **Aluminum** Rivet Nuts only, other materials of various Rivet Nuts must be tested before setting to protect 6044 Tool.
- 5) The Rivet Nuts packed in Color Boxes or in 4-Cover Plastic Box may be various on request.
- 6) Ordering example: 6044-04M508, 5 pcs.

G-RNK6044 - ITEM NO. 6044



RECYCLE