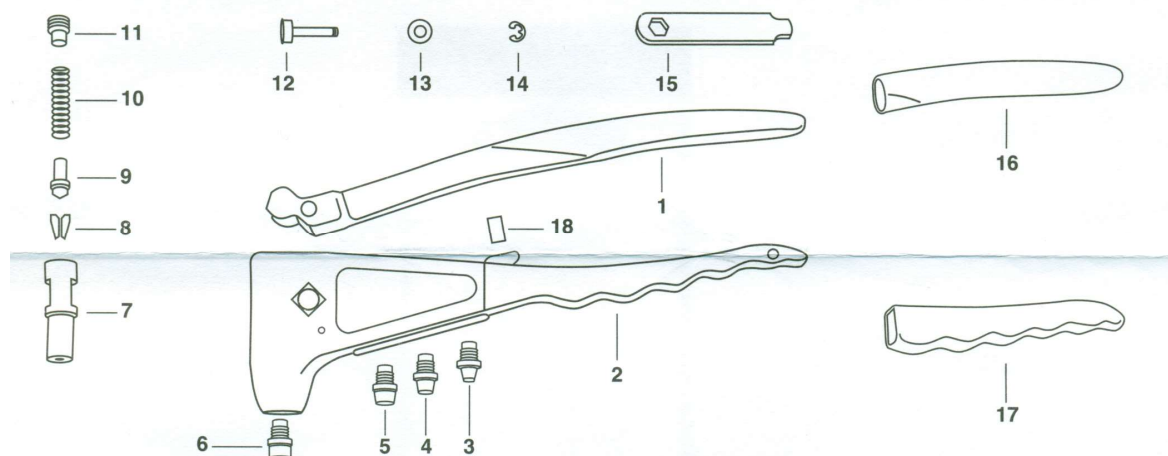




RESERVEDELSOVERSIGT – VAREN.R. 6032

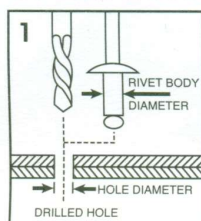
PROFESSIONAL HAND RIVETER



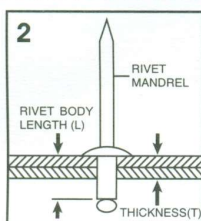
NO.	PART NO.	PARTNAME	NO.	PART NO.	PARTNAME
1	6032-01	UPPER HANDLE	10	6032-10	JAW PUSHER SPRING
2	6032-02	ALUMINUM BODY	11	6032-11	RETAINING SCREW
3	6032-03	NOSEPIECE, 2.4mm or 3/32"	12	6032-12	FULCRUM PIN
4	6032-04	NOSEPIECE, 3.0/3.2mm or 1/8"	13	6032-13	FULCRUM PIN BEARING
5	6032-05	NOSEPIECE, 4.0mm or 5/32"	14	6032-14	SNAP RING
6	6032-06	NOSEPIECE, 4.8/5.0mm or 3/16"	15	6032-15	WRENCH, W-4
7	6032-07	COLLET CASE	16	6032-16	UPPER GRIP
8	6032-08	JAWS (2-PC TYPE)	17	6032-17	LOWER GRIP
9	6032-09	JAW PUSHER	18	6032-18	SHOCK ABSORBER

NOTES: Please order parts by Part Number and Part Name. Keep all moving parts oiled.

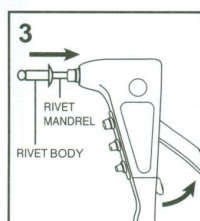
OPERATION INSTRUCTIONS



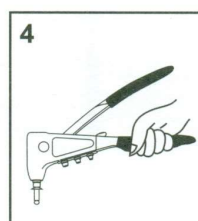
Select appropriate Rivet for application and drill same size or a little bigger (0.1mm, 0.004") hole through workpieces to be fastened.



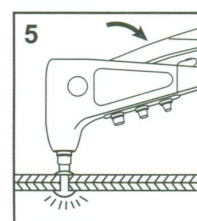
Select Rivet Body Length (L) based on the combined thickness (T) of workpieces to be fastened. It is suggested $L-T \geq 4.0\text{mm}$ or $0.16"$.



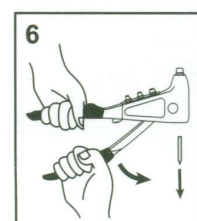
Open Tool Handle fully and insert Rivet Mandrel all the way into Tool Working Nosepiece.



Tool Working Nosepiece can hold Rivet Mandrel in any position for convenient operation.

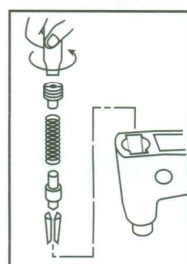


Insert Rivet Body into the drilled hole completely. Squeeze Tool Handle until Rivet Mandrel breaks off. If more than one squeeze is required, open Tool Handle fully and squeeze again.

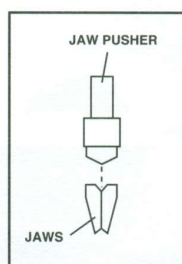


Finally open Tool Handle fully to eject spent Mandrel from Tool, either from Working Nosepiece or from upper side.

HOW TO CHANGE JAWS, ETC. PARTS



1. Close Tool Handle completely.
2. Remove Retaining Screw with Wrench, then remove Jaw Pusher Spring, Jaw Pusher and Jaws from Collet Case.
3. Clean or replace Jaws, oiling outside of Jaws with light machine oil before re-assembly.



4. Reverse the above steps to reassemble, making sure that bevelled end of Jaw Pusher fits into the bevel provided by the Jaws.

WARNING

